

JVC

SCHEMATIC DIAGRAMS

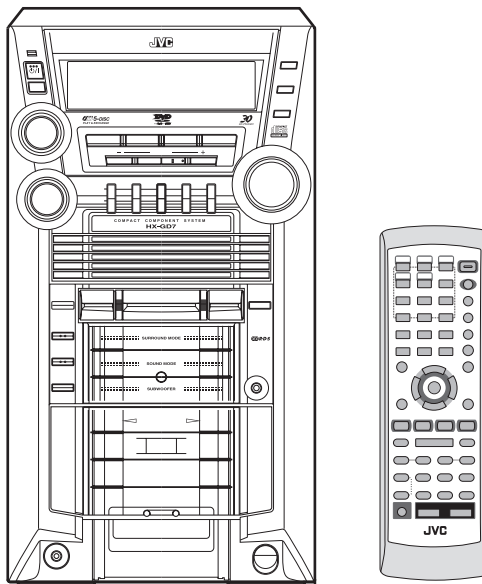
COMPACT COMPONENT SYSTEM

HX-GD7

CD-ROM No.SML200405

Area suffix

A ----- Australia
 B ----- U.K.
 E ----- Continental Europe
 EN ----- Northern Europe
 EV ----- Eastern Europe
 EE ----- Russian Federation



AV COMPU LINK

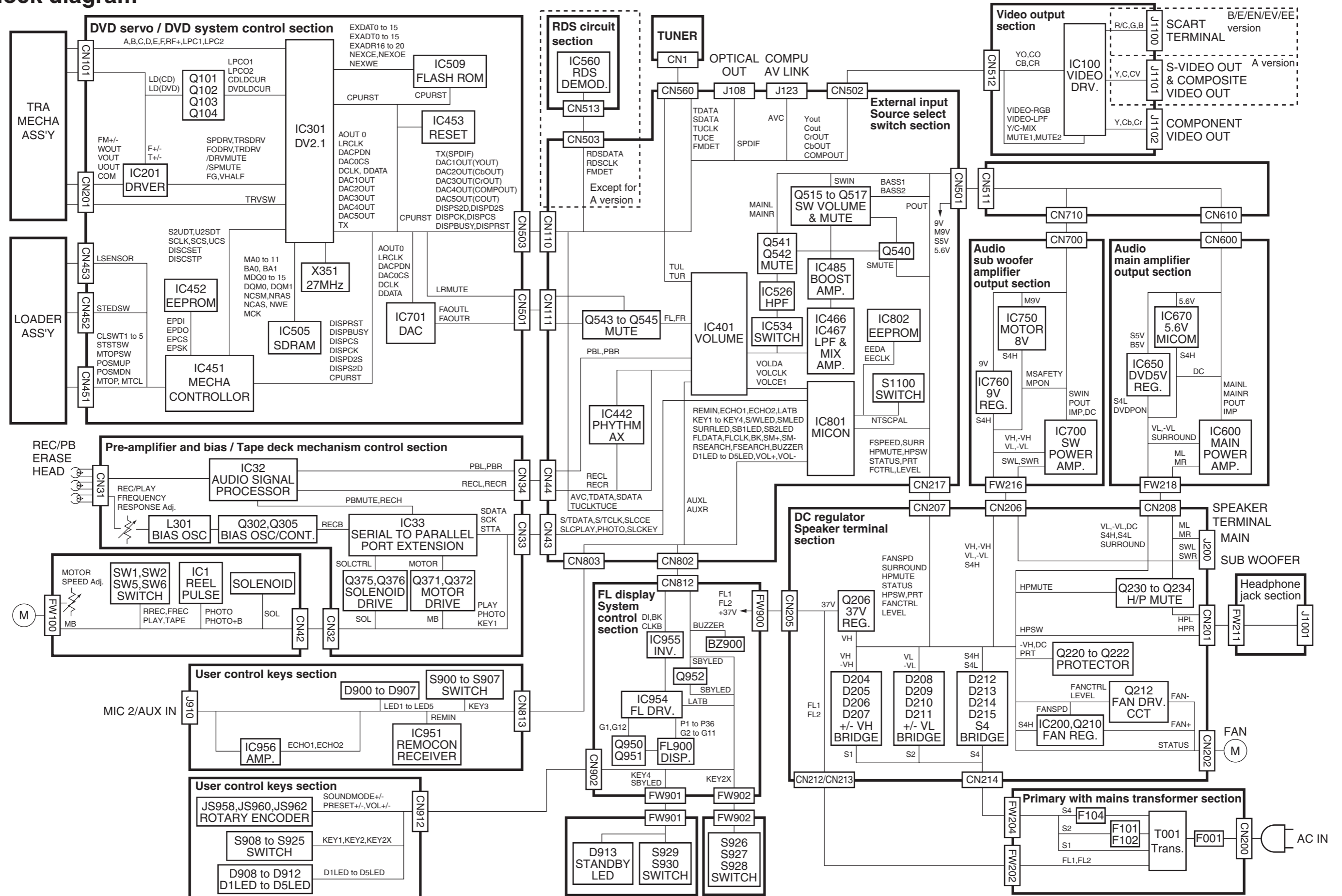
Contents

Block diagram	2-1
Standard schematic diagrams	2-2
Printed circuit boards	2-11 to 15

In regard with component parts appearing on the silk-screen printed side (parts side) of the PWB diagrams, the parts that are printed over with black such as the resistor (■), diode (⬤) and ICP (●) or identified by the "▲" mark nearby are critical for safety.

(This regulation does not correspond to J and C version.)

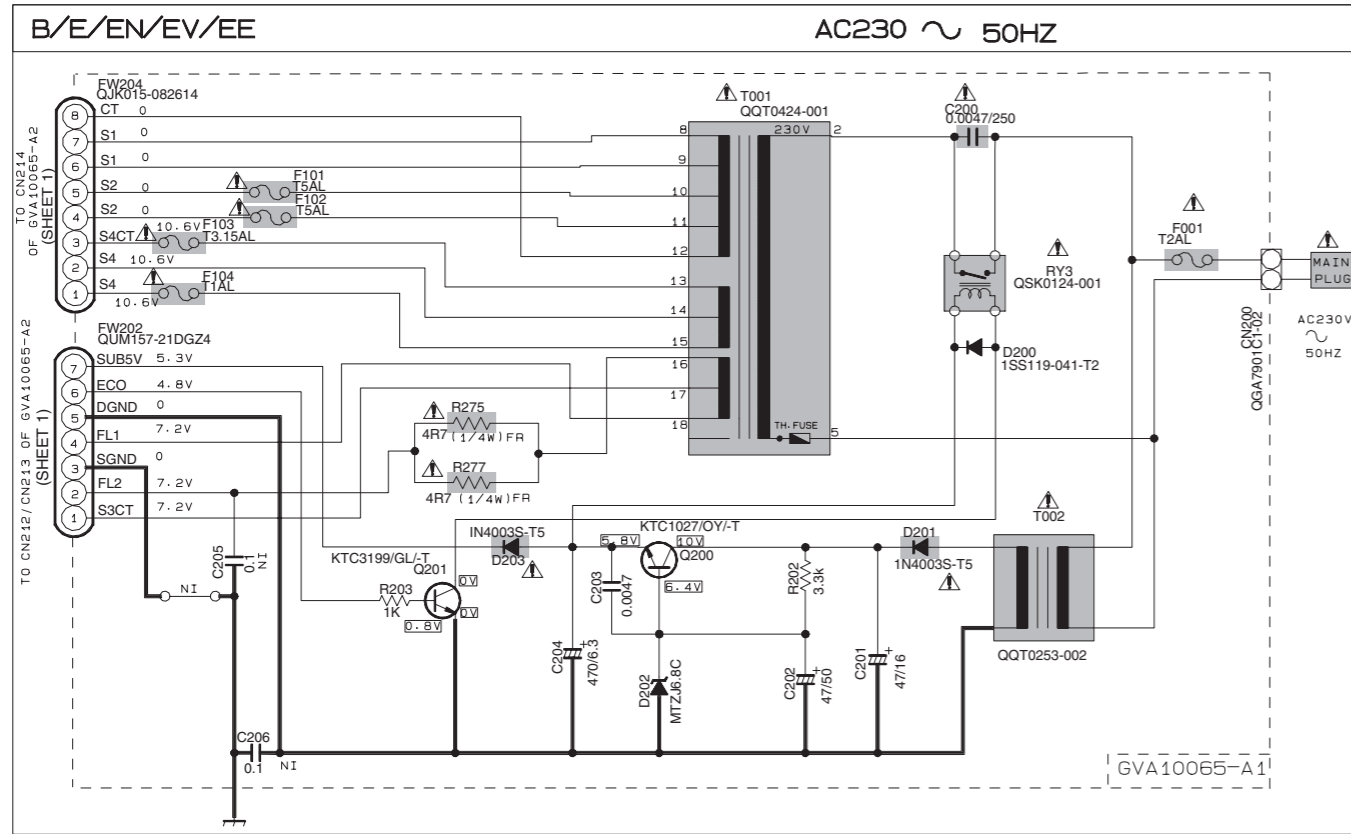
Block diagram



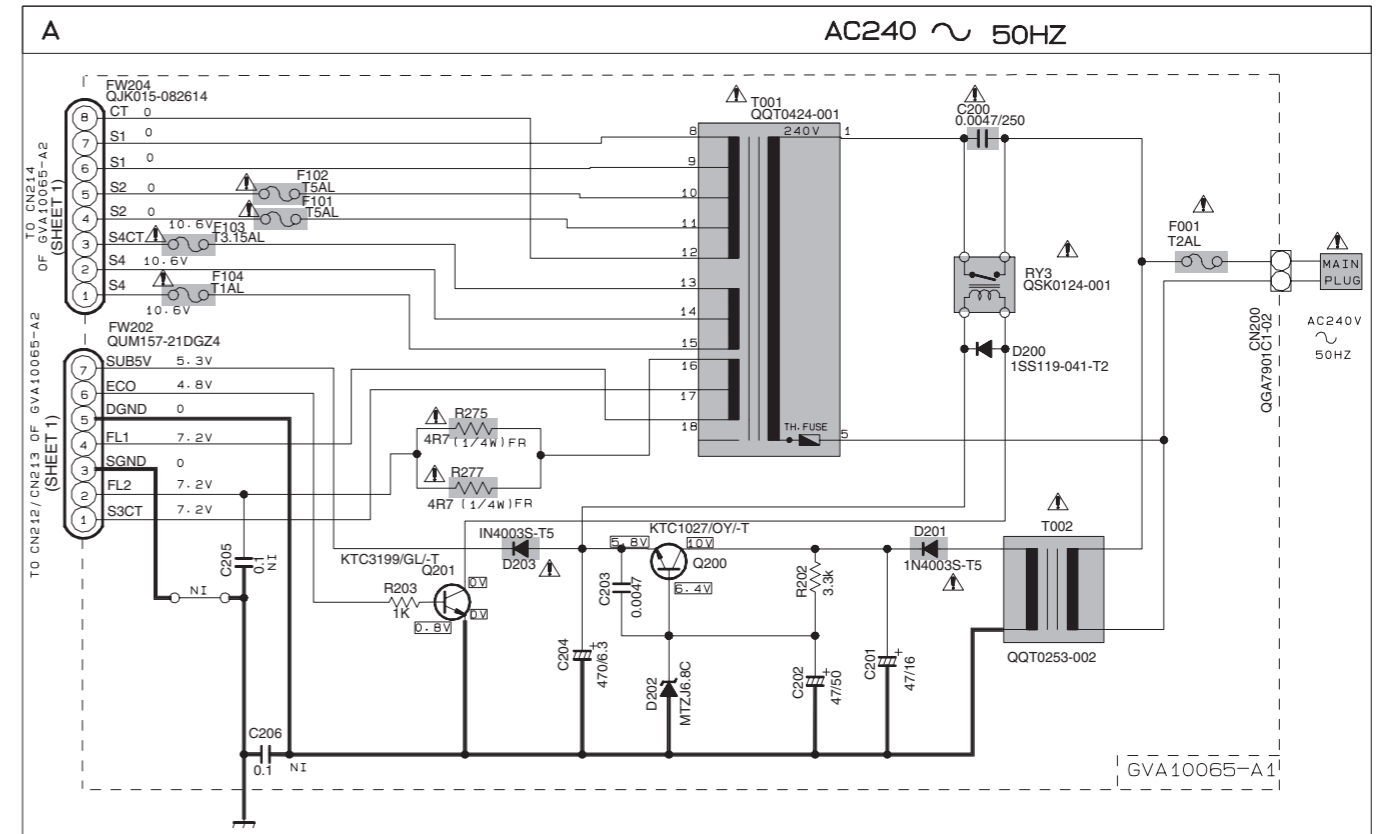
Standard schematic diagrams

■ Primary with main transformer section

POWER SUPPLY BLOCK



POWER SUPPLY BLOCK



EXPLANATION OF OVERALL OF SCHEMA.

MODEL HX-GD7

SHEET NUMBER	CIRCUITS DESCRIPTION
1	.PRIMARY WITH MAINS TRANSFORMER
2	.DC REGULATORS/AUDIO OUTPUT
3	.EXTERNAL INPUT, SOURCE SELECTOR SWITCH
4	.FL DISPLAY, SYSTEM CONTROL, USER CONTROL KEYS
5	.VIDEO OUTPUT CIRCUIT
6	.RDS CIRCUIT
7	.DVD SERVO AND DVD SYSTEM CONTROL
8	.DVD CHANGER MECHANISM CONTROL
9	.TAPE CIRCUITS SUCH AS PRE-AMP AND BIAS .TAPE DECK MECHANISM CONTROL

VERSION CODES

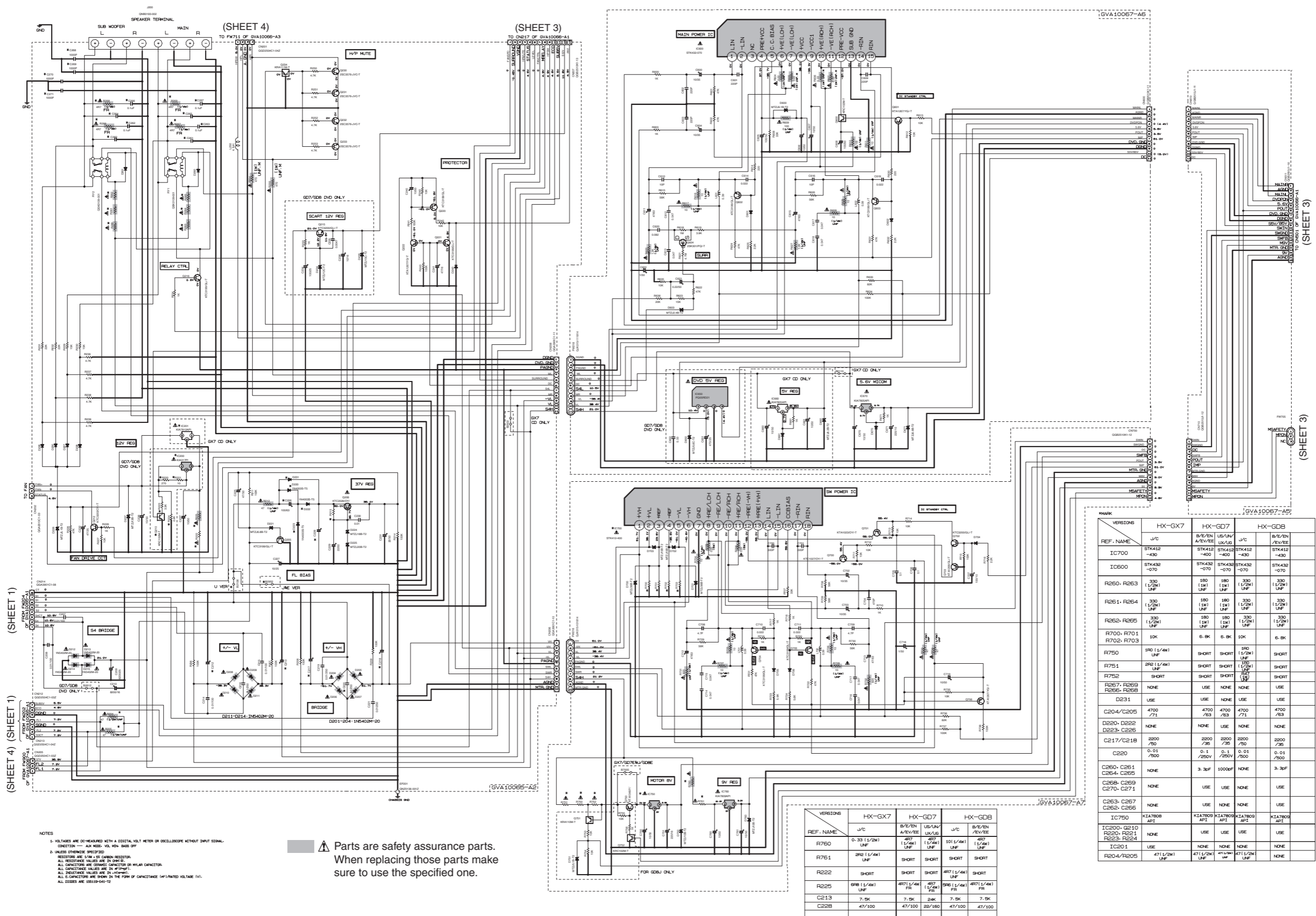
J : U.S.A
C : CANADA
B : U.K
E : CONTINENTAL EUROPE
EN : NORTH EUROPE
EV : EASTERN EUROPE
EE : RUSSIA
A : AUSTRALIA
LW : SOUTH AMERICA EXCEPT ARGENTINA
US : SINGAPORE
UN : INDONESIA
UX : SAUDI ARABIA

NOTE

1. NI - COMPONENT NOT INSERT

▲ Parts are safety assurance parts.
When replacing those parts make sure to use the specified one.

■ DC regulators / Audio output section



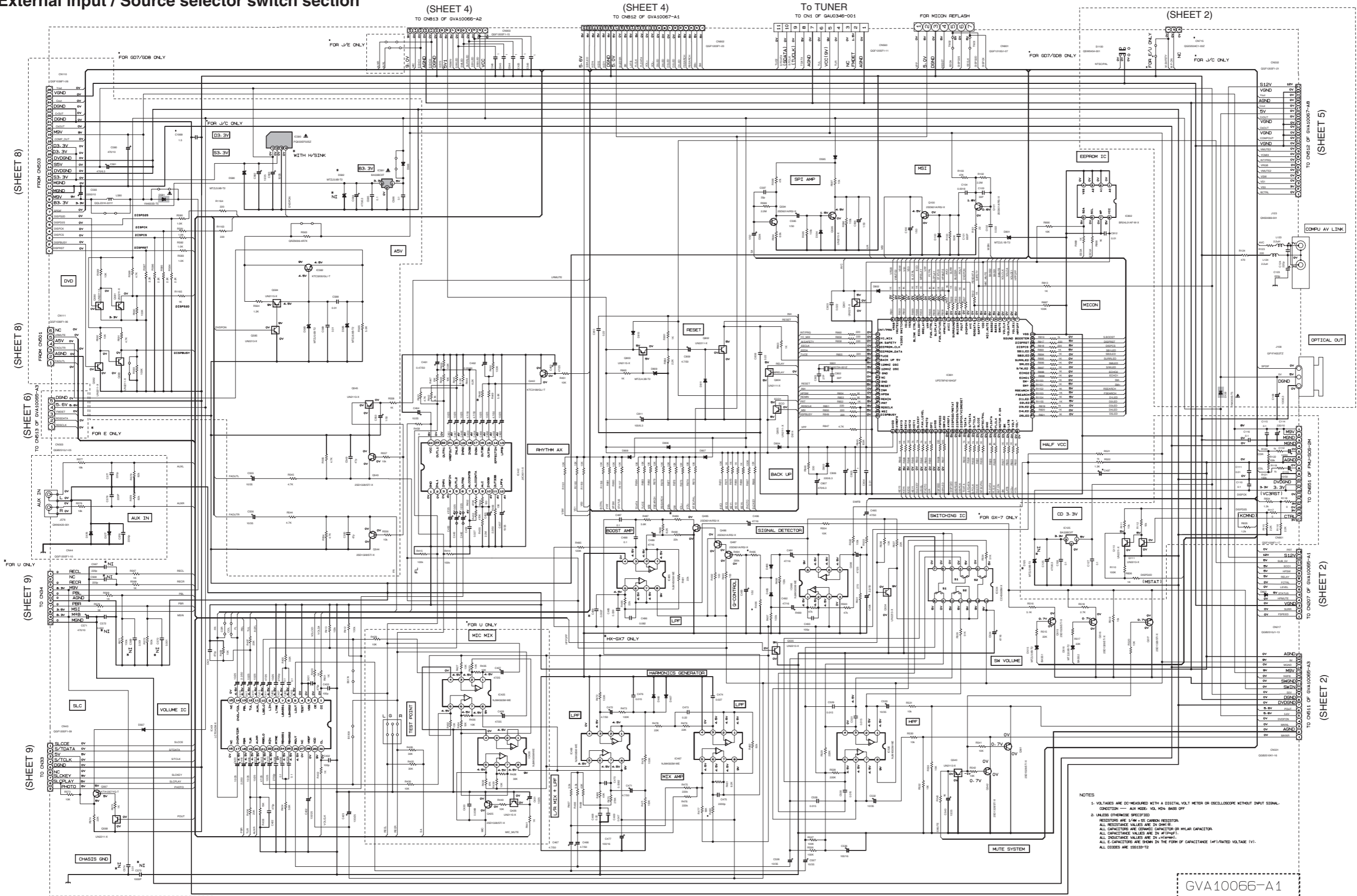
NOTES
 1. VOLTAGES ARE DC-MEASURED WITH A RESISTAL VOLT METER OR OSCILLOSCOPE WITHOUT INPUT SIGNAL.
 CONNECTION --- FOR MEAS. VOL. SW. MADE OFF
 2. UNLESS OTHERWISE SPECIFIED
 RESISTORS ARE 1/4W ±5% CARBON RESISTOR.
 ALL RESISTANCE VALUES ARE IN OHMS UNLESS OTHERWISE SPECIFIED.
 ALL CAPACITORS ARE CERAMIC CAPACITOR OR POLYMER CAPACITOR.
 ALL CAPACITANCE VALUES ARE IN pF UNLESS OTHERWISE SPECIFIED.
 ALL INDUCTANCE VALUES ARE IN mH UNLESS OTHERWISE SPECIFIED.
 ALL E-CAPACITORS ARE SHOWN IN THE FORM OF CAPACITANCE (μF)/RATED VOLTAGE (V).
 ALL CODES ARE 100109-041-12

⚠ Parts are safety assurance parts.
 When replacing those parts make sure to use the specified one.

REF. NAME	HX-GX7		HX-GD7		HX-GDB	
	J/C	B/E/EN A/EV/EE	J/C	US/AN/UK/US	J/C	B/E/EN /EV/EE
R760	0.33 (1/2W) UNF	400 (1/2W) UNF	400 (1/2W) UNF	101 (1/4W) UNF	400 (1/2W) UNF	400 (1/2W) UNF
R761	200 (1/4W) UNF	SHORT	SHORT	SHORT	SHORT	SHORT
R222	SHORT	SHORT	SHORT	407 (1/4W) UNF	SHORT	SHORT
R225	600 (1/4W) UNF	407 (1/4W) FR	407 (1/4W) FR	600 (1/4W) FR	407 (1/4W) FR	407 (1/4W) FR
C213	7.5K	7.5K	24K	7.5K	7.5K	7.5K
C228	47/100	47/100	20/100	47/100	47/100	47/100

VERSIONS	HX-GX7		HX-GD7		HX-GDB	
	J/C	B/E/EN A/EV/EE	J/C	US/AN/UK/US	J/C	B/E/EN /EV/EE
IC700	STK412-430	STK412-430	STK412-430	STK412-430	STK412-430	STK412-430
IC600	STK432-070	STK432-070	STK432-070	STK432-070	STK432-070	STK432-070
R260, R263	330 (1/2W) UNF	180 (1/4W) UNF	180 (1/4W) UNF	330 (1/2W) UNF	330 (1/2W) UNF	330 (1/2W) UNF
R261, R264	330 (1/2W) UNF	180 (1/4W) UNF	180 (1/4W) UNF	330 (1/2W) UNF	330 (1/2W) UNF	330 (1/2W) UNF
R262, R265	330 (1/2W) UNF	180 (1/4W) UNF	180 (1/4W) UNF	330 (1/2W) UNF	330 (1/2W) UNF	330 (1/2W) UNF
R700, R701 R702, R703	10K	6.8K	6.8K	10K	6.8K	6.8K
R750	100 (1/4W) UNF	SHORT	SHORT	100 (1/4W) UNF	SHORT	SHORT
R751	200 (1/4W) UNF	SHORT	SHORT	100 (1/4W) UNF	SHORT	SHORT
R752	SHORT	SHORT	SHORT	100 (1/4W) UNF	SHORT	SHORT
R267, R269 R266, R268	NONE	USE	NONE	NONE	USE	USE
D231	USE	USE	NONE	USE	USE	USE
C204/C205	4700 /71	4700 /63	4700 /63	4700 /71	4700 /63	4700 /63
D220, D222 D223, C226	NONE	NONE	USE	NONE	NONE	NONE
C217/C218	2200 /50	2200 /50	2200 /50	2200 /50	2200 /50	2200 /50
C220	0.01 /500	0.1 /250V	0.1 /250V	0.01 /500	0.01 /500	0.01 /500
C260, C261 C264, C265	NONE	3.30F	10000F	NONE	3.30F	3.30F
C268, C269 C270, C271	NONE	USE	USE	NONE	USE	USE
C263, C267 C262, C266	NONE	USE	NONE	NONE	USE	USE
IC200, IC201	NONE	USE	NONE	NONE	NONE	NONE
R204/R205	47 (1/2W) UNF	47 (1/2W) UNF	47 (1/2W) UNF	47 (1/2W) UNF	47 (1/2W) UNF	NONE

External input / Source selector switch section



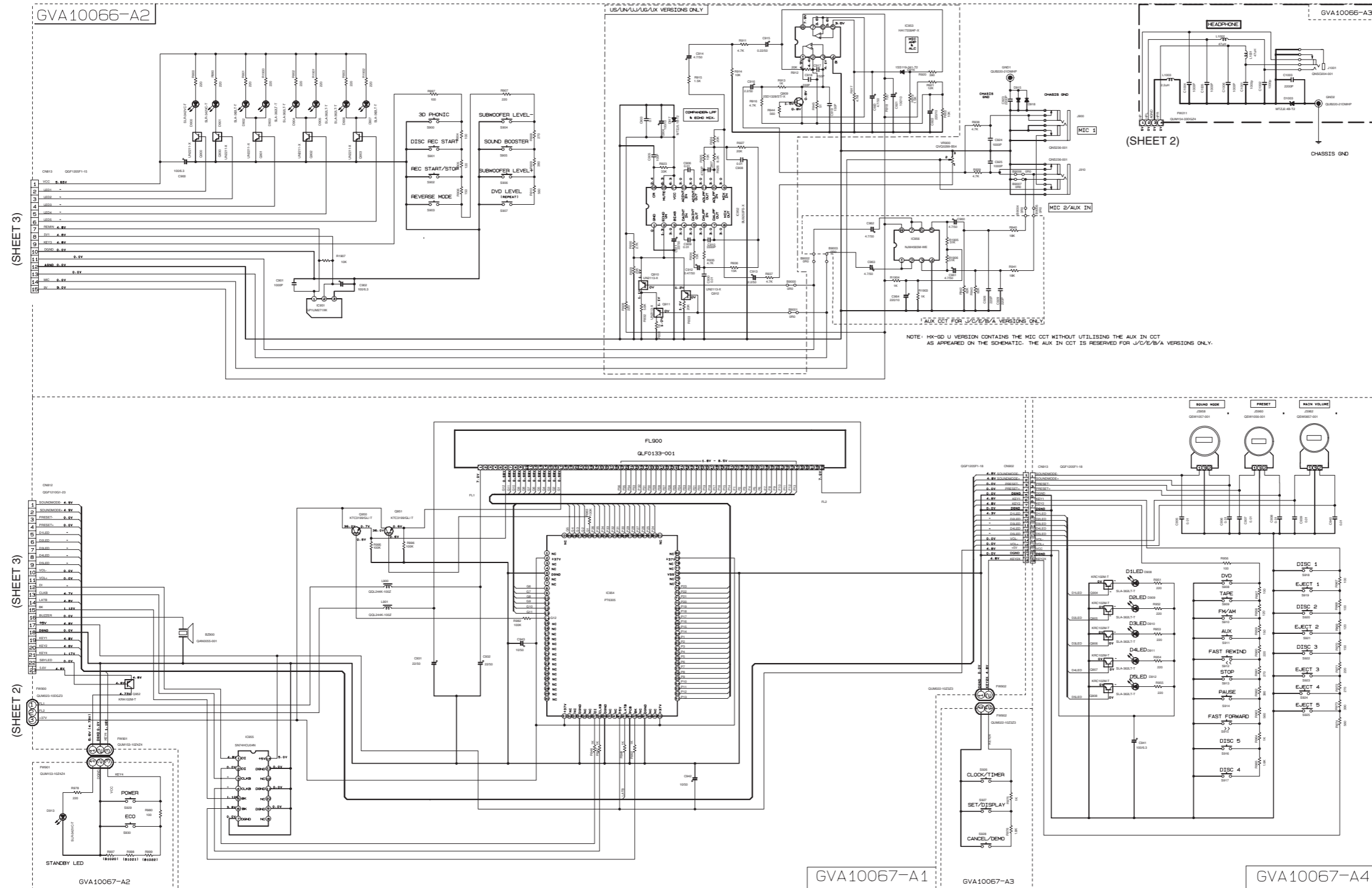
NOTES
 1. VOLTAGES ARE DC-MEASURED WITH A DIGITAL VOLT METER OR OSCILLOSCOPE WITHOUT INPUT SIGNAL.
 CONDITION — AUX MODE- VOL. HOLD. BASS OFF
 2. UNLESS OTHERWISE SPECIFIED
 RESISTORS ARE 1/4W ±5% CARBON RESISTOR.
 ALL RESISTANCE VALUES ARE IN OHMS.
 ALL CAPACITANCE VALUES ARE IN #1PμF.
 ALL INDUCTANCE VALUES ARE IN μH(WHM).
 ALL CAPACITORS ARE SHOWN IN THE FORM OF CAPACITANCE (μF)/RATED VOLTAGE (V).
 ALL COILS ARE 150HZ/12

GVA10066-A1

MODEL	HX-GX7		HX-GD7			HX-GDB		MODEL	HX-GX7		HX-GD7		HX-GDB	
VERSION	J/C	E SERIES	U SERIES	J/C	E SERIES	U SERIES	J/C	E SERIES	J/C	E SERIES	U SERIES	J/C	E SERIES	
R480	1.0K	1.3K	1.3K	1.3K	51K	51K	6.8K	6.8K	R489	11K	11K	11K	56K	
C497	220/16	220/16	330/16	220/16	150K	150K	150K	150K						
R503	5.6K	10K	10K	5.6K	10K	4.7K	4.7K	4.7K						

⚠ Parts are safety assurance parts.
 When replacing those parts make
 sure to use the specified one.

FL display / System control / User control keys section



REF. NO.	Q08	VERSION				
		J/C	B/E/EN/EE	US/UN/UJ	UW	UX
R997	(B1020)	100	100	220	230	430
R998	(B1021)	B/W	120	120	130	130
R999	(B1022)	B/W	B/W	B/W	220	270

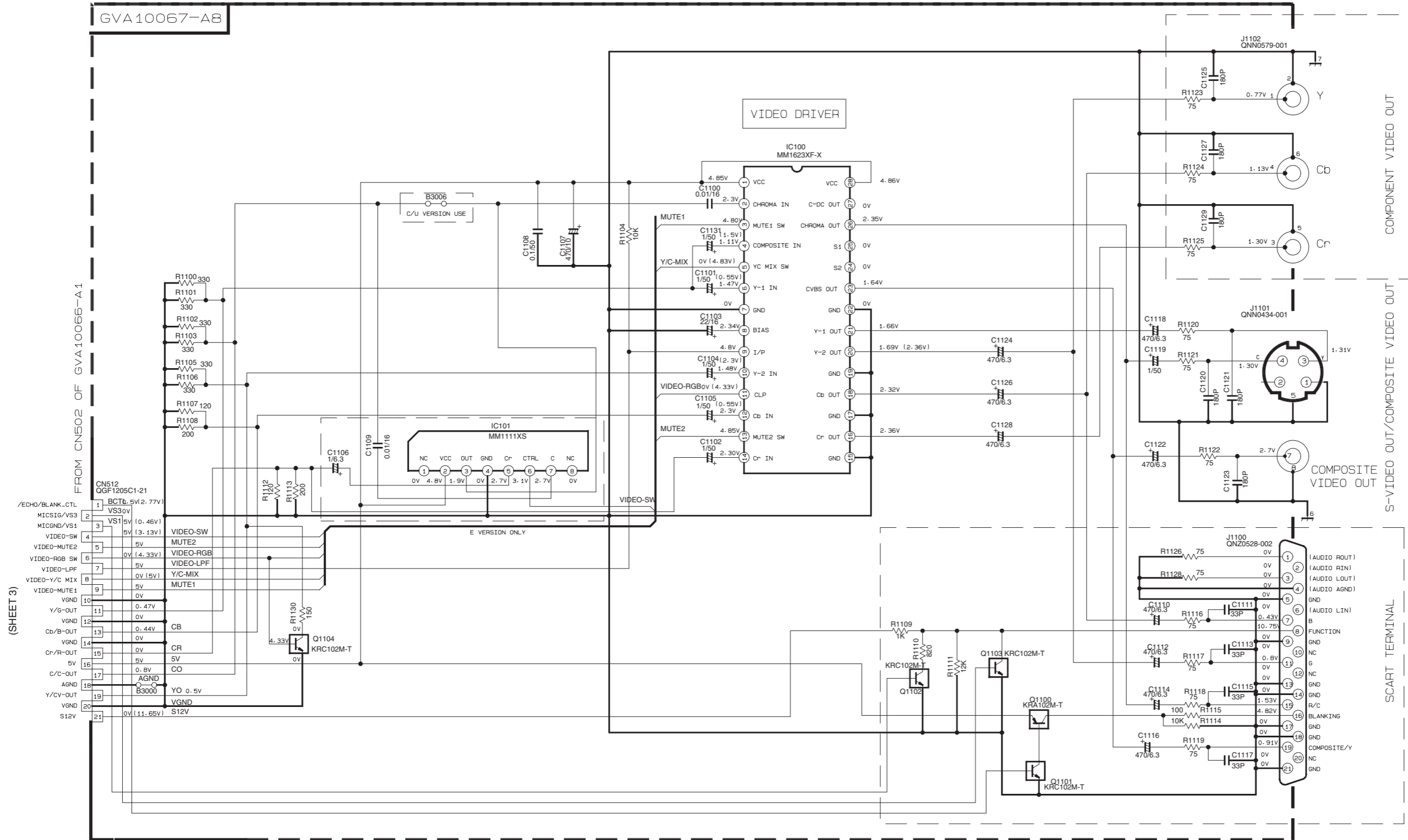
REF. NO.	Q07	VERSION				
		J/C	B/E/EN/EE	US/UN/UG	A	UX
R997	(B1020)	130	820	2.7K	2.7K	10K
R998	(B1021)	430	430	110	110	100
R999	(B1022)	390	560	B/W	1.8K	110

REF. NO.	QX7	VERSION				
		J/C	B/E/EN/EE	US/UN/UJ	UW	UX
R997	(B1020)	100	100	220	230	430
R998	(B1021)	B/W	120	120	130	130
R999	(B1022)	B/W/B/W	B/W	220	270	390

NOTES

- VOLTAGES ARE DC-MEASURED WITH A DIGITAL VOLT METER AUX MODE. VOL MIN- BASS OFF CONDITION --- OR OSCILLOSCOPE WITHOUT INPUT SIGNAL.
- UNLESS OTHERWISE SPECIFIED
RESISTORS ARE 1/4W ± 5% CARBON RESISTOR.
ALL RESISTANCE VALUES ARE IN OHM(Ω).
ALL CAPACITORS ARE CERAMIC CAPACITOR OR MYLAR CAPACITOR.
ALL CAPACITANCE VALUES ARE IN *F(FH=PF).
ALL INDUCTANCE VALUES ARE IN *H(mmh).
ALL E-CAPACITORS ARE SHOWN IN THE FORM OF CAPACITANCE (*F)/RATED VOLTAGE (V).
ALL DIODE ARE 1SS119-041-T2
ALL TACT SWITCH ARE G50674-001Z
NI ---> COMPONENT NOT INSERT
SHORT ---> REPLACE BY BUS WIRE
- CN990 ONLY USE FOR FLASH MICOM

Video output circuit section

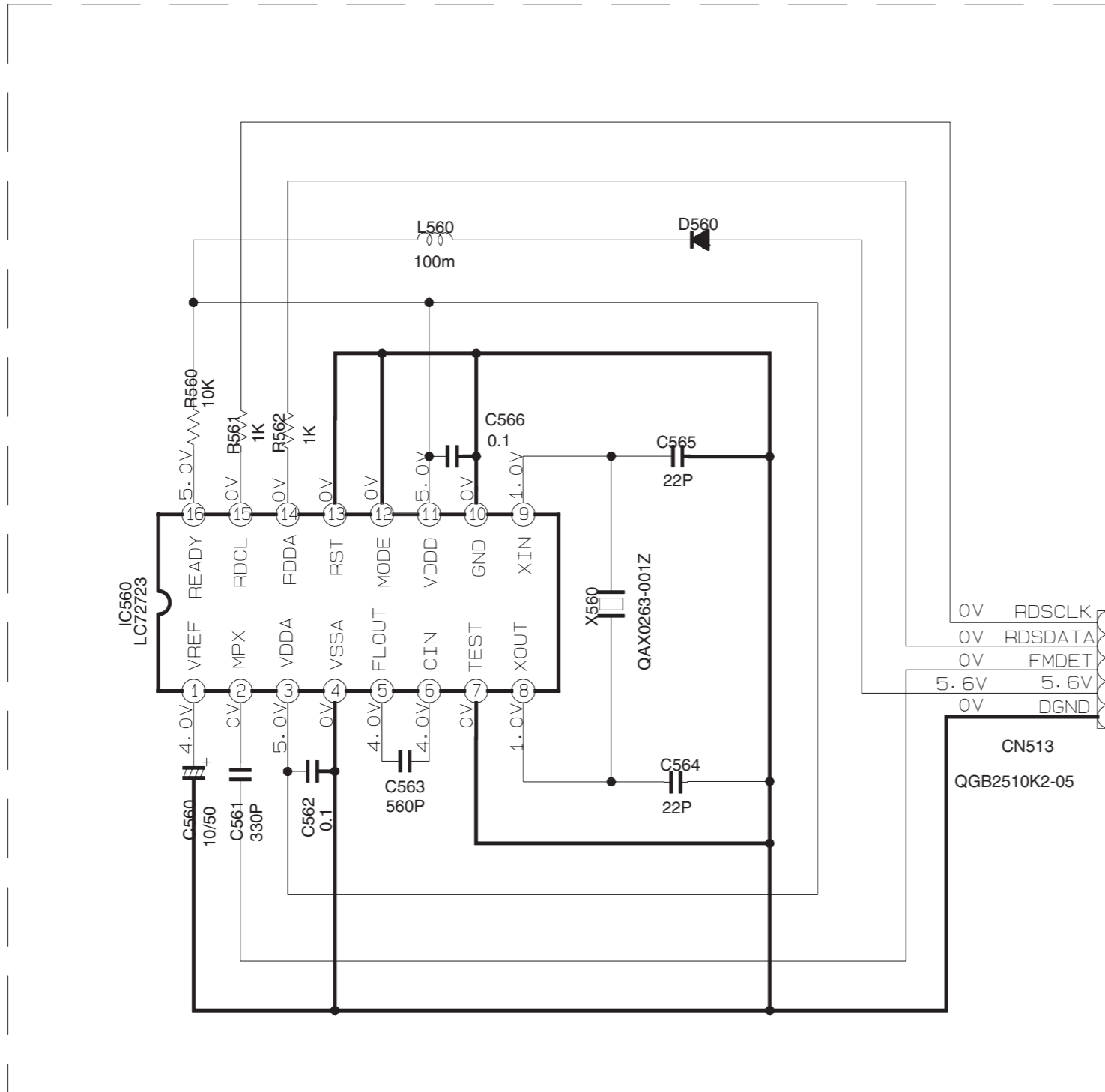


NOTES

- VOLTAGES ARE DC-MEASURED WITH A DIGITAL VOLTMETER OR OSCILLOSCOPE WITHOUT INPUT SIGNAL CONDITION -- PLAY DVD THEN STOP. VOL MIN. BASS OFF
- UNLESS OTHERWISE SPECIFIED
RESISTORS ARE 1/4W, 5% CARBON RESISTOR
ALL RESISTANCE VALUES ARE IN OHM
ALL CAPACITORS ARE CERAMIC CAPACITOR OR MYLAR CAPACITOR
ALL CAPACITANCE VALUES ARE IN UF (P = pF)
ALL INDUCTANCE VALUES ARE IN H (m=μH)
ALL E-CAPACITORS ARE SHOWN IN THE FORM OF CAPACITANCE (μF)/RATED VOLTAGE(V)
ALL DIODES ARE 1SS119-041-T2
- THE VOLTAGES SHOWN ARE FOR ALL VERSION EXCEPT FOR E-VERSION. E VERSION VOLTAGES ARE SHOWN IN () FORM IF THEY DIFFER FROM THE COMMON VOLTAGES

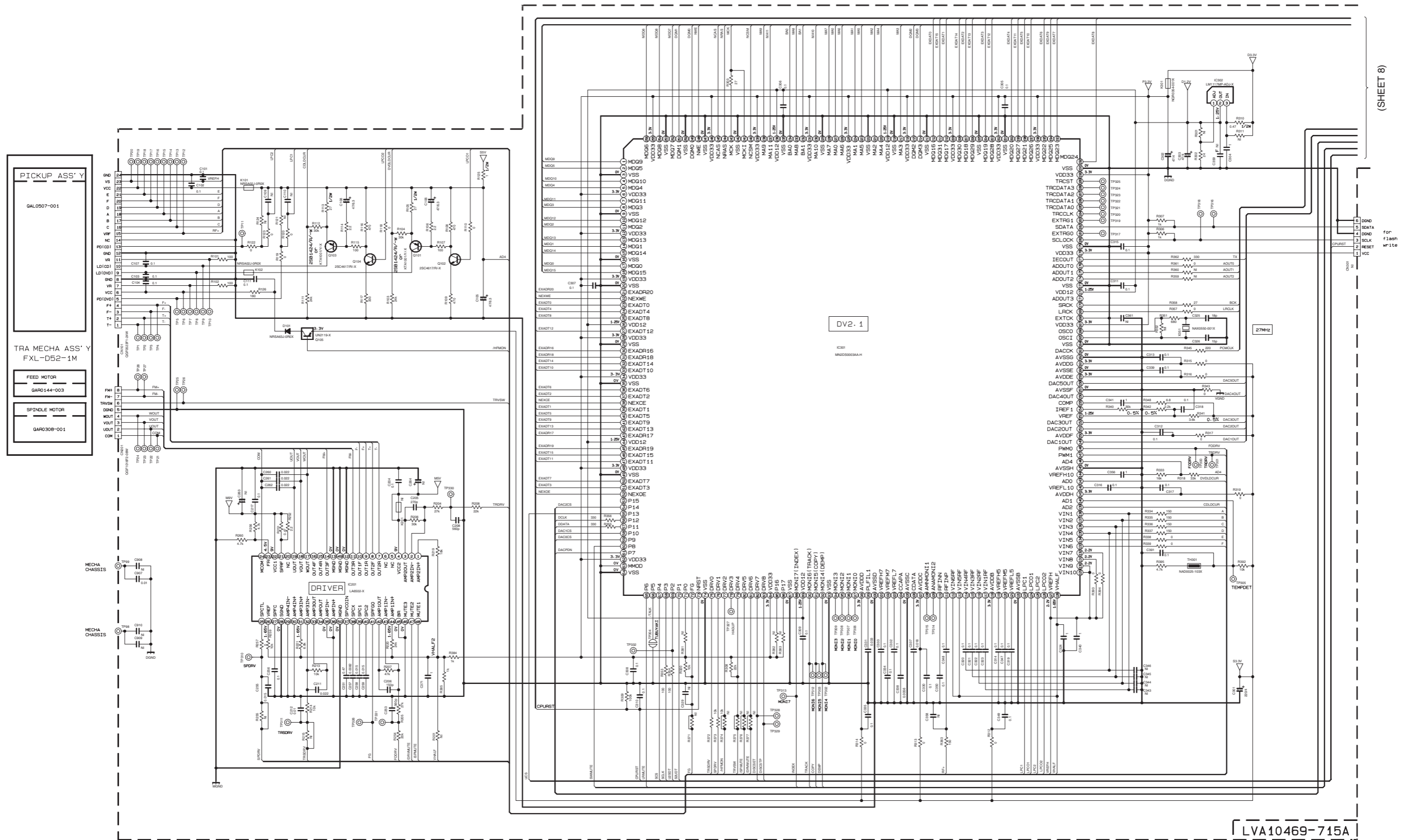
■ RDS circuit section

*
FOR EUROPE ONLY



TO CN503 OF GVB10066-A1
(SHEET 3)

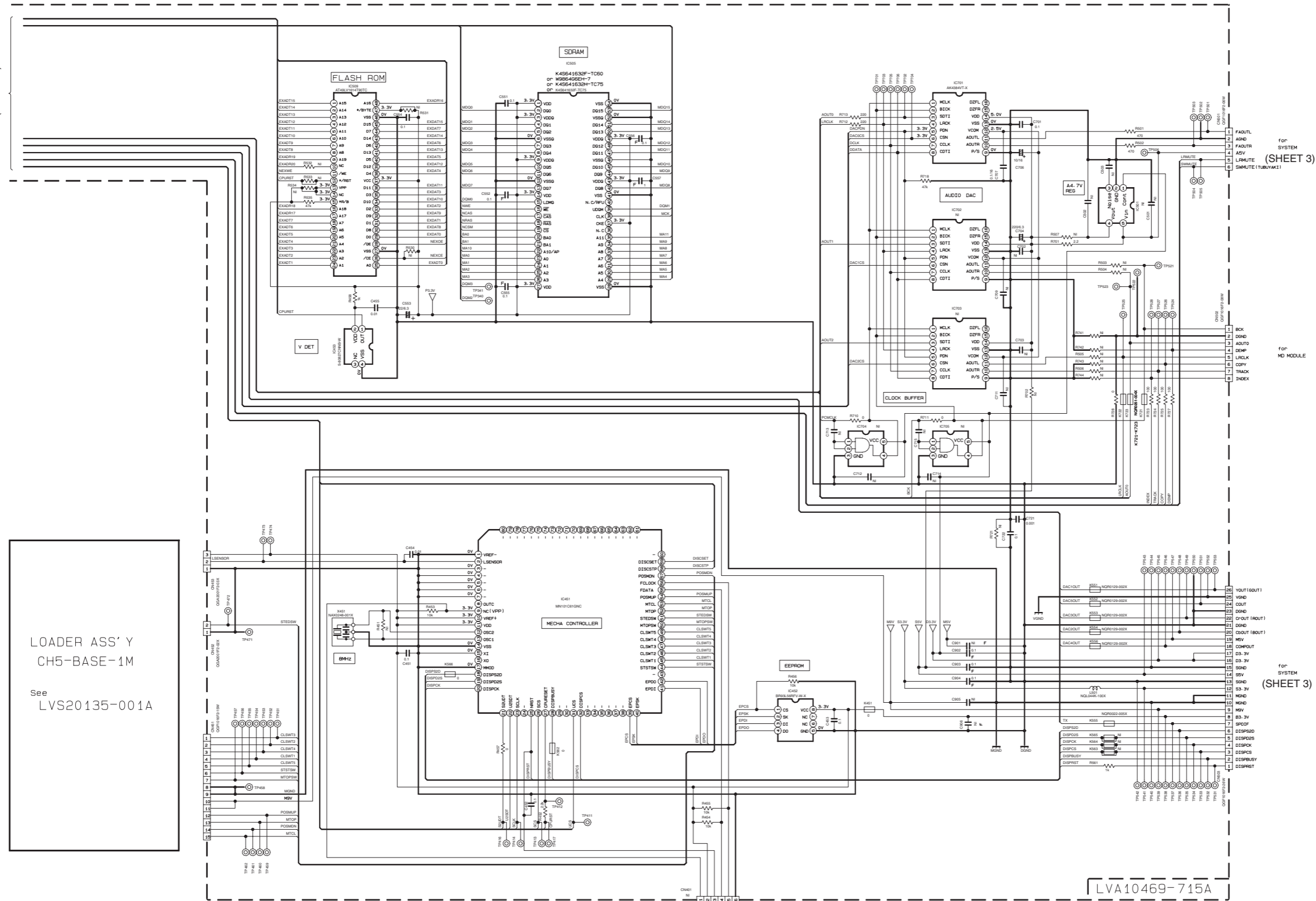
DVD servo / DVD system control section



(SHEET 8)

DVD changer mechanism control section

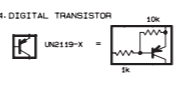
(SHEET 7)



LOADER ASS'Y
CH5-BASE-1M
See
LVS20135-001A

NOTES

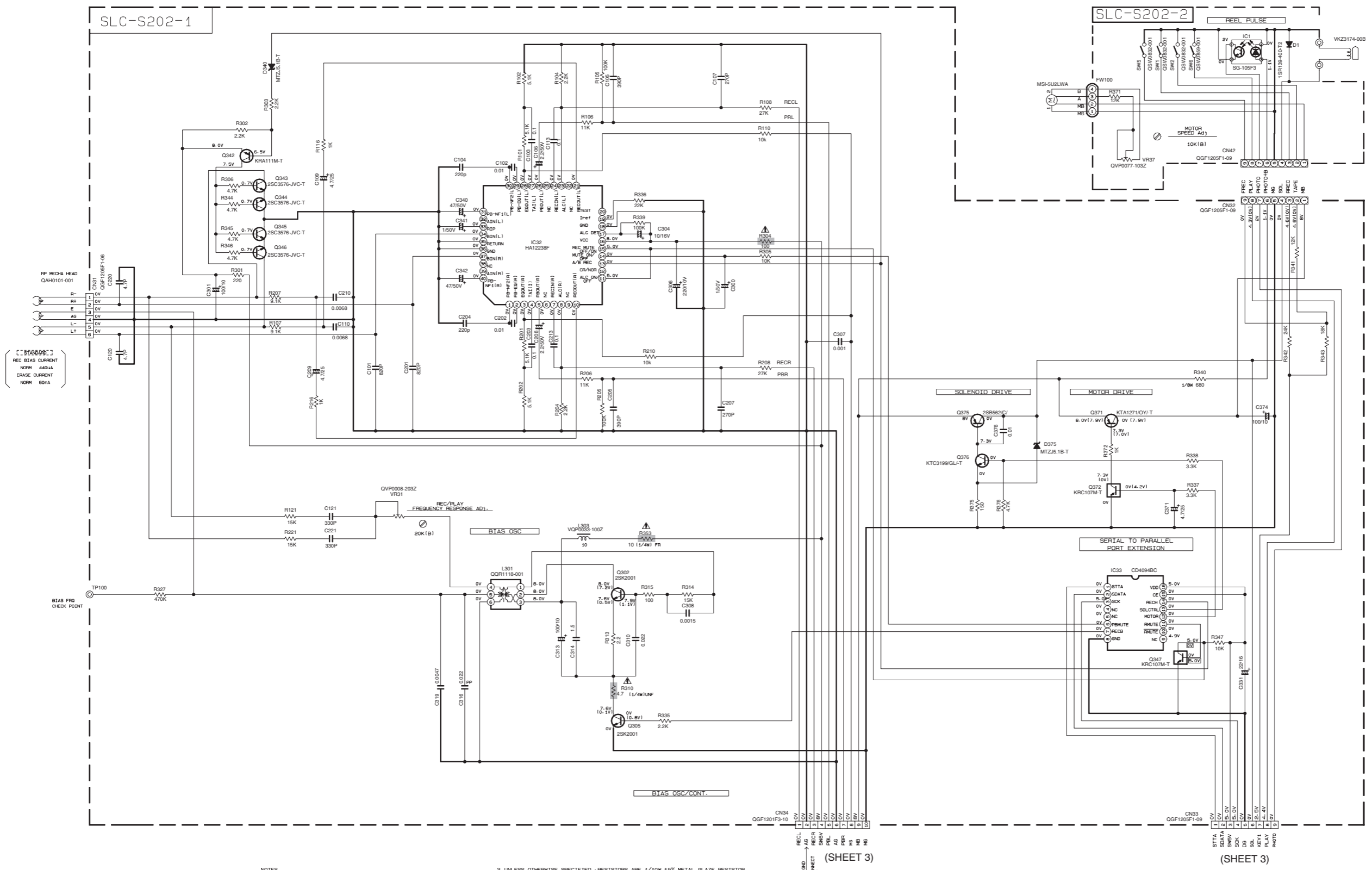
- VOLTAGES ARE DC-MEASURED WITH A DIGITAL VOLT METER WITHOUT INPUT SIGNAL.
CONDITION --- A DVD disc in Trays; STOP mode
- UNLESS OTHERWISE SPECIFIED:
ALL RESISTORS ARE 1/10W ±5% METAL GLAZE RESISTOR, OR 0.5% METAL GLAZE RESISTOR.
ALL CAPACITORS ARE 50V, 25V, 16V, 10V OR 6.3V CERAMIC CAPACITOR.
ALL RESISTANCE VALUES ARE IN OHM(Ω).
ALL CAPACITANCE VALUES ARE IN μF(μF).
ALL E-CAPACITORS ARE SHOWN IN THE FORM OF CAPACITANCE(μF)/RATED VOLTAGE (V).
ALL INDUCTANCE VALUES ARE IN mH(mH).
- NI STANDS FOR NOT INSERTED PARTS.



for flash writer

LVA10469-715A

■ Tape circuits such as pre-amp. and bias / Tape deck mechanism control section



NOTES
 1. VOLTAGES ARE DC-MEASURED WITH A DIGITAL VOLT METER OR OSCILLOSCOPE WITHOUT INPUT SIGNAL. CONDITION: MECHA STOP MODE

2. UNLESS OTHERWISE SPECIFIED, RESISTORS ARE 1/10W ±5% METAL GLAZE RESISTOR. ALL RESISTANCE VALUES ARE IN OHM(Ω). ALL CAPACITORS ARE CERAMIC CAPACITOR OR MYLAR CAPACITOR. ALL CAPACITANCE VALUES ARE IN #F(PpF). ALL INDUCTANCE VALUES ARE IN #H(mH). ALL E-CAPACITORS ARE SHOWN IN THE FORM OF CAPACITANCE (#F)/RATED VOLTAGE (V). ▬ POLYPROPYLENE CAPACITOR

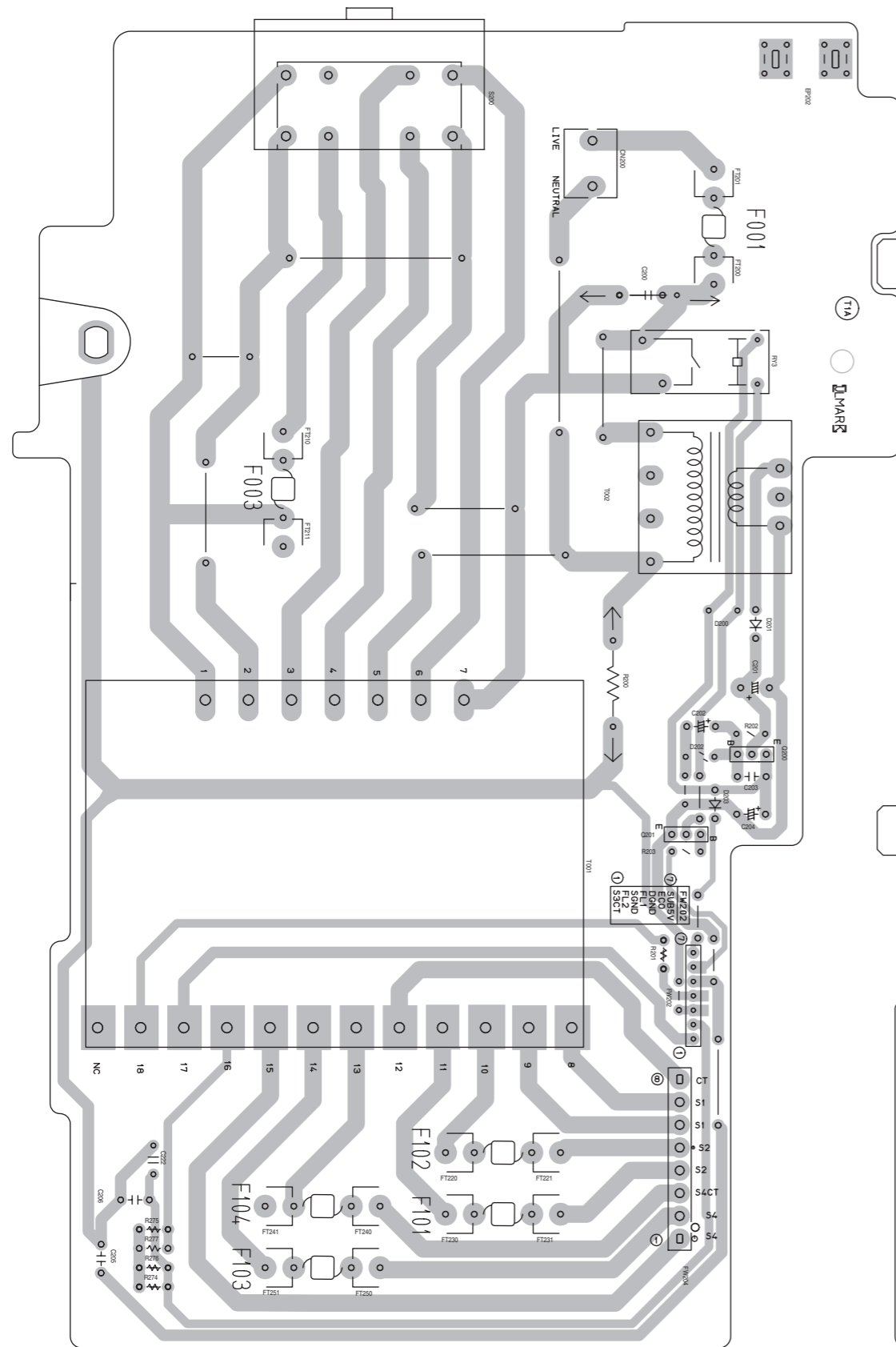
(SHEET 3)

(SHEET 3)

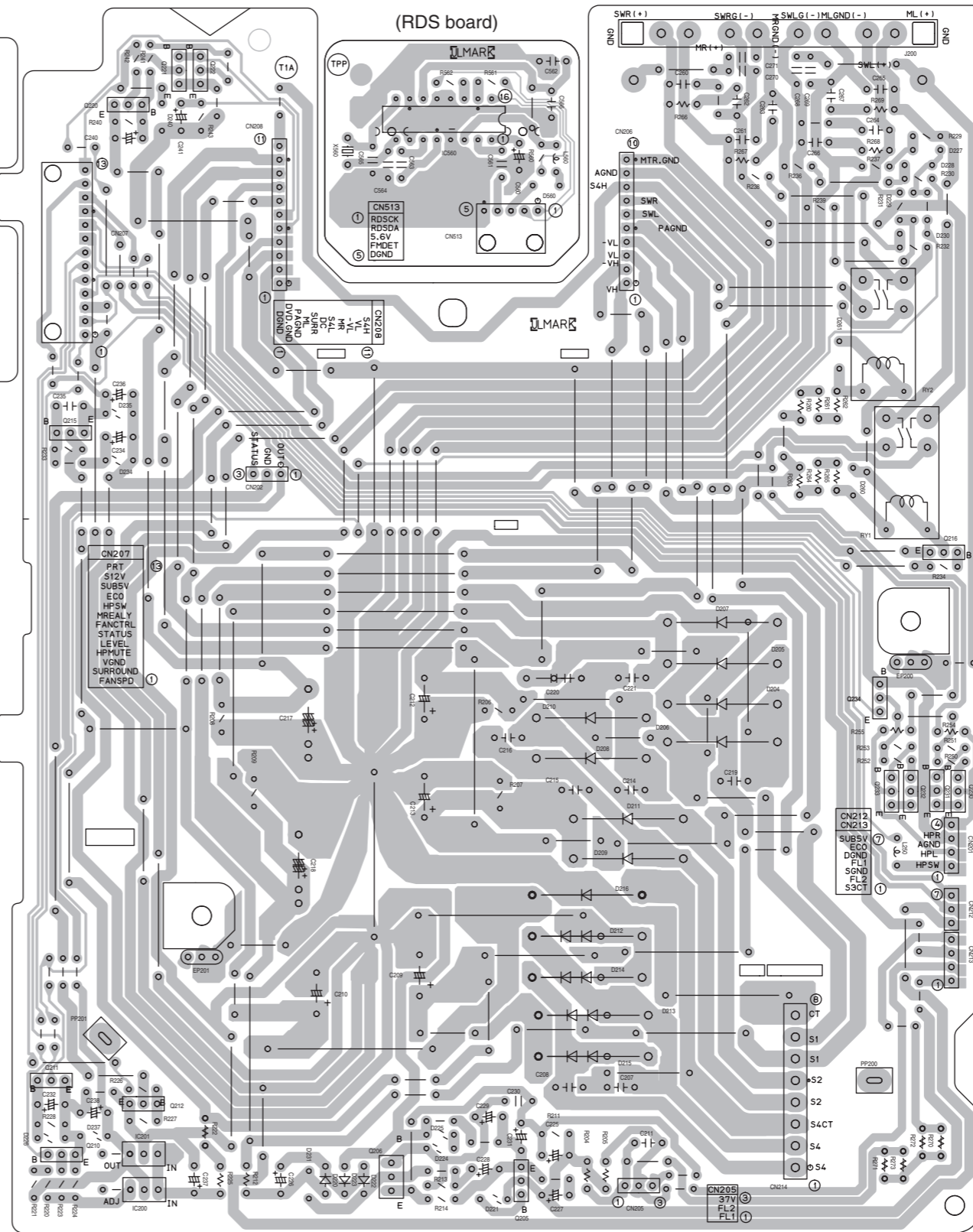
▲ Parts are safety assurance parts. When replacing those parts make sure to use the specified one.

Printed circuit boards

■ Power board

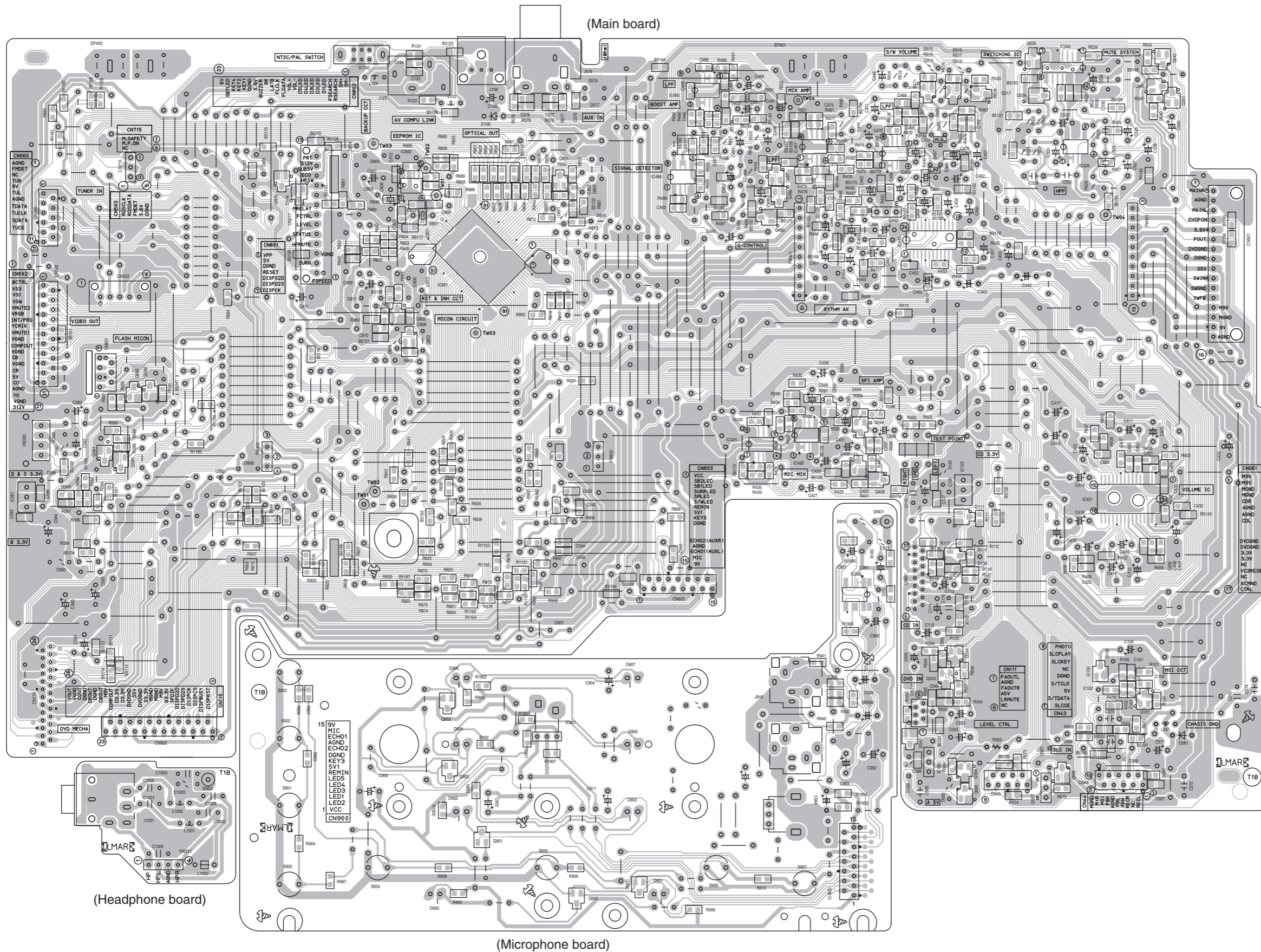


(Primary board)

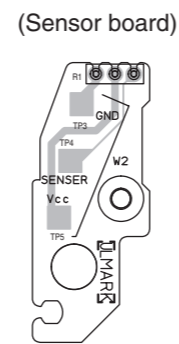
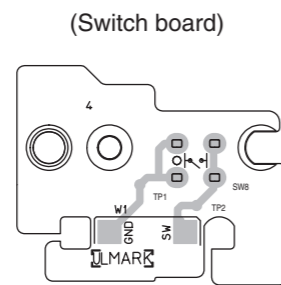
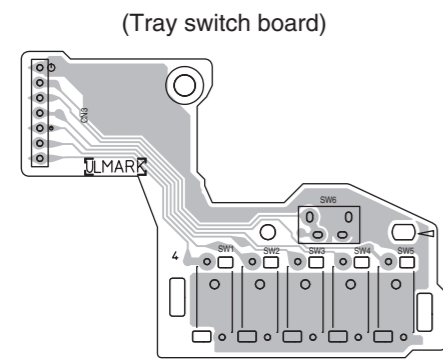
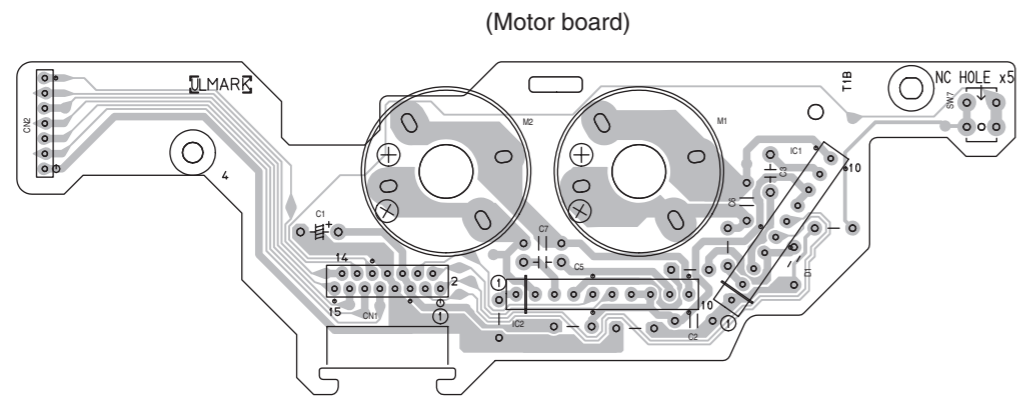


(Bridge board)

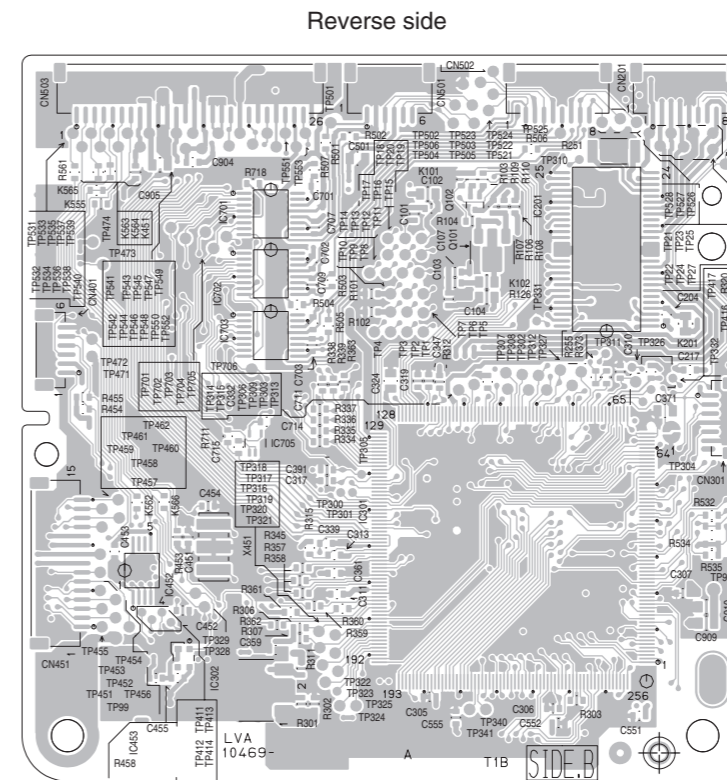
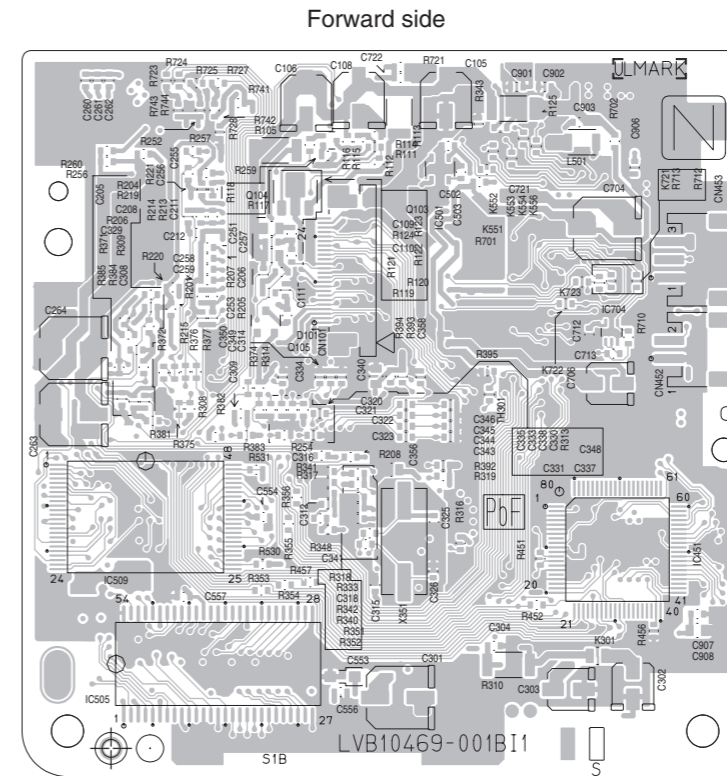
■ Input board



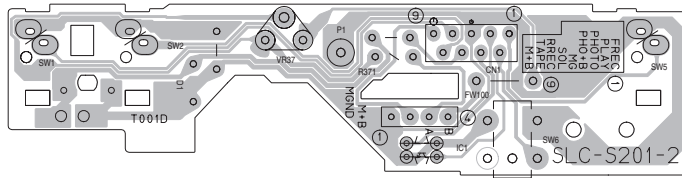
■ Loading board



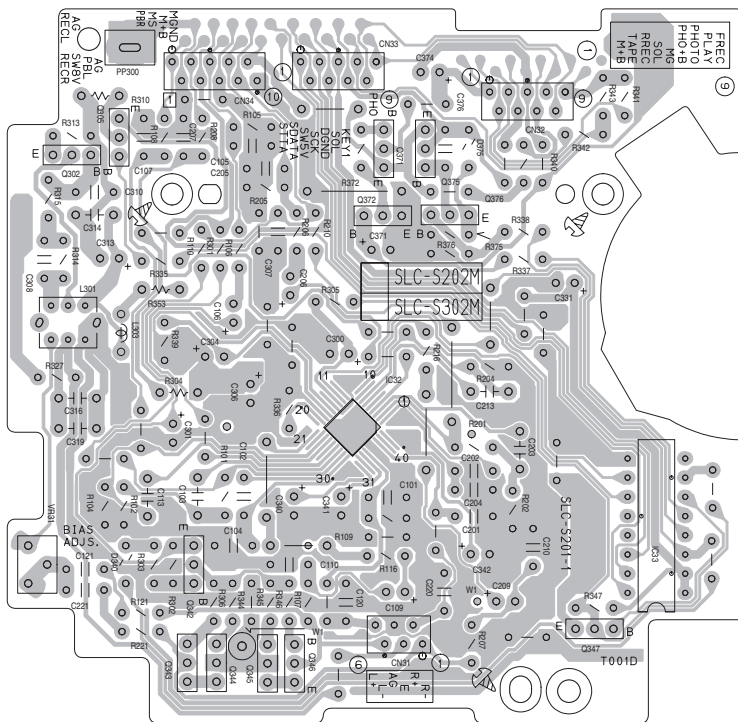
■ DVD servo board



■ Cassette switch board



■ Head amplifier board



JVC

VICTOR COMPANY OF JAPAN, LIMITED

AV & MULTIMEDIA COMPANY AUDIO/VIDEO SYSTEMS CATEGORY 10-1, 1chome, Ohwatari-machi, Maebashi-city, 371-8543, Japan

(No.MB225SCH)



Printed in Japan
WPC